

# The Role of the Local Health Protection Unit in Healthcare Associated Infection & Infection Prevention & Control



Liz Stokle

Senior Health Protection Nurse, HPA NE

[Liz.stokle@hpa.org.uk](mailto:Liz.stokle@hpa.org.uk)

14 June 2010

# Outcome



*To have an understanding of the scope and nature of the Health Protection Unit Role*

# What Is Health Protection?

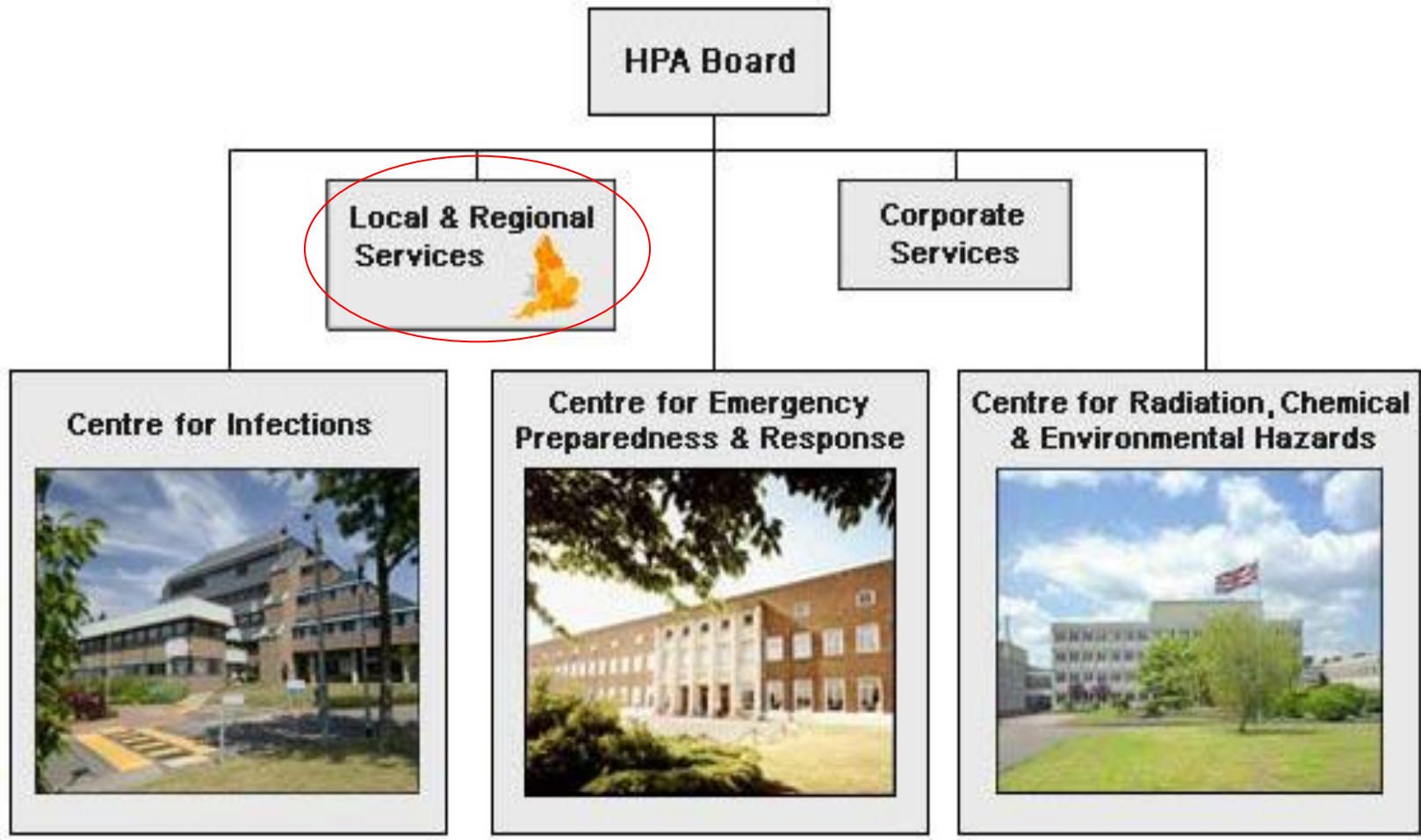


*“Protecting the health and well-being of the population from **infectious diseases** and in preventing harm when hazards involving chemicals, poisons or radiation occur.*

*It also includes preparing for new and emerging threats, such as a bio-terrorist attack or virulent new strain of disease”*

*Health Protection Agency website*

# HPA Organogram



# The NE Health Protection Unit



The 'eyes and ears' of the Agency.

Continually monitor health issues in local areas.

# The NE Health Protection Unit



Give advice and support to

- Social care sector
- Local NHS
- Civil and emergency authorities if a biological or environmental incident or outbreak happens.



# The HPU Team – Clinical Component

**Each unit has:**

- Specialist Health Protection Nurses,
- Consultants in Health Protection (often doctors)

***ready to respond to incidents around the clock.***



# The HPU Team – Information & Epidemiological Component

## **Local and regional level:**

- Gather and interpret local information to
- create a picture of diseases and other hazards in our area

***used in planning and coordinating our work.***

# Supporting Network



- Regional health emergency planning advisors,
- Regional HPA Laboratory & microbiology network for laboratory analysis.

# Partners



Primary Care Trust – Public Health & Infection  
Control Teams

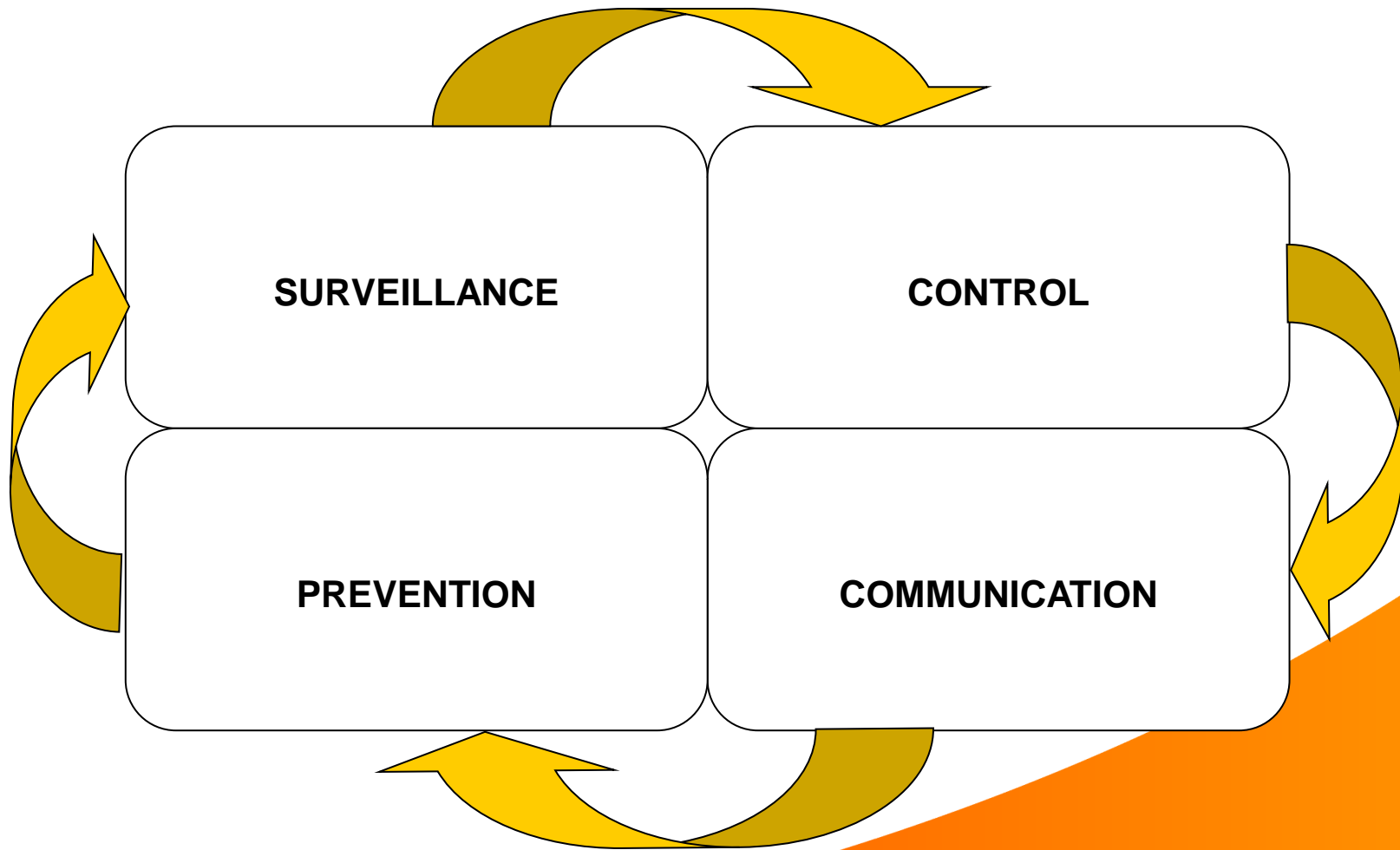
Local Authority – Environmental Health Department

Acute Trusts

Private & Voluntary sector

Other government organisations e.g. FSA, CQC

# Role of Health Protection Team



# Prevention Work of HPU



**Proactive work is about preventing health incidents from happening.**

**This includes working with health and social care partners to :**

- Provide effective immunisation programmes
- Help prevent healthcare associated infections e.g. MRSA and *C. Difficile*

# Surveillance



Compiling and studying local statistics on *notifiable* diseases e.g. Tuberculosis

...and *non-notifiable* diseases e.g. MRSA

# Notifications of Infectious Diseases (NOIDs)



<http://www.hpa.org.uk/Topics/InfectiousDiseases/InfectionsAZ/NotificationsOfInfectiousDiseases/>

Information is fed up to a national database

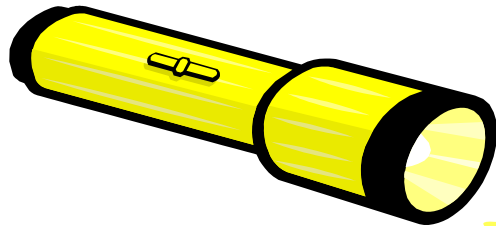
# Reactive Work of HPU



***Reactive work* is about minimising the risk to the general public once an incident happens.**

- Advice to stop infectious diseases & infections from spreading e.g. MRSA
- Risk assessment & control of outbreaks e.g. Winter vomiting disease, influenza,
- Recommendations on ways to prevent them happening again.
- Tracing people who may have come into contact with, or be carrying an infectious disease e.g. TB

# Surveillance



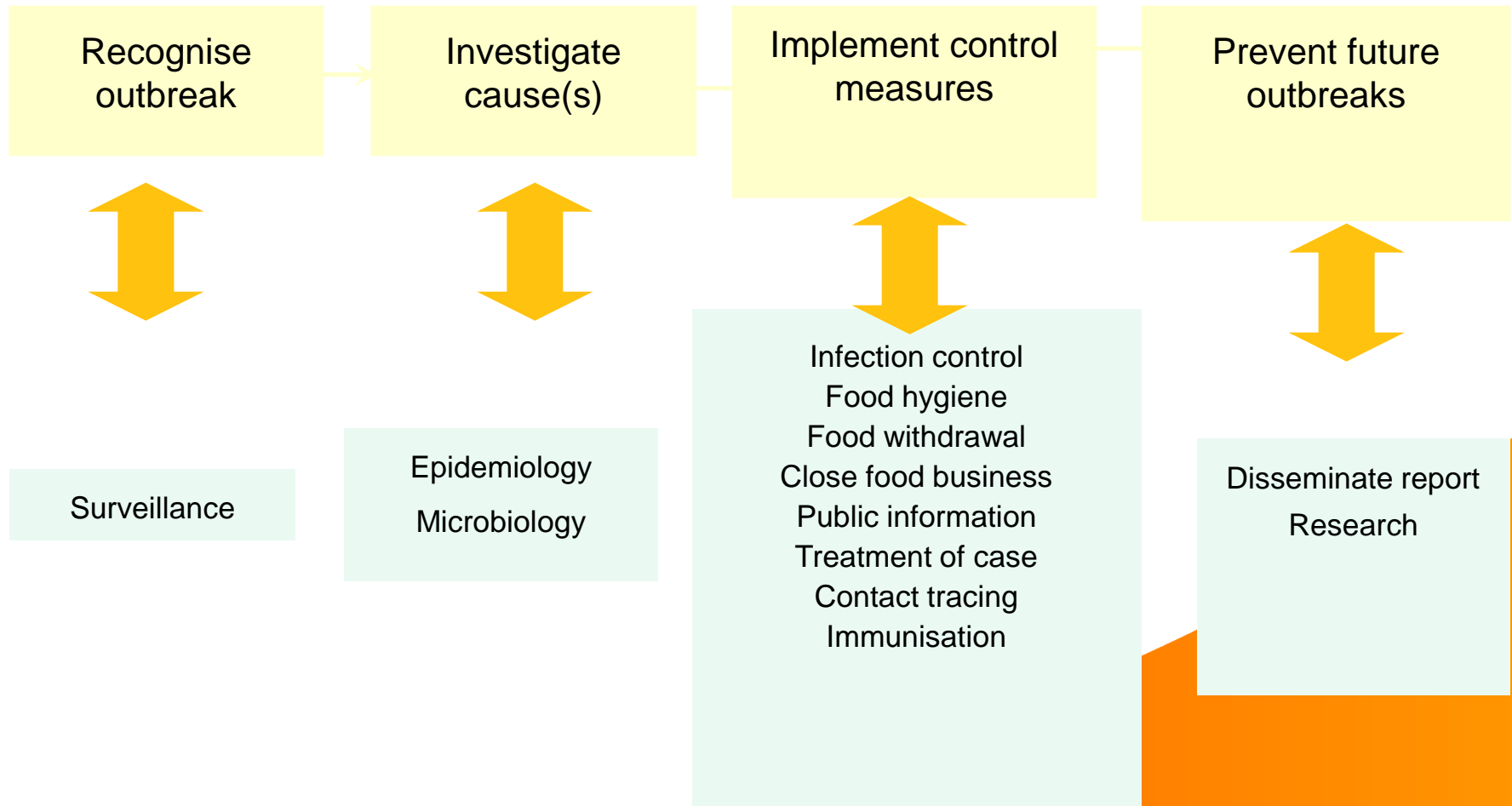
**Microbiology laboratory reports**

**Infectious disease notifications from doctors**

**Immunisation Information**

**Ad hoc reports from schools, hospitals etc.**

# Investigation and Control of an Incident/outbreak



# Communications



*Importance of public health messages*

*Acute – what to do and what not to do*

*Longer term – health promotion, awareness raising*

*Risk communication - “Warning and informing”*

*Dealing with the media*

# Summary



Work in partnership with local organisations to prevent and control infectious and non-infectious hazards in the community, includes:

Provision of reports and expert interpretation of trends in infections to assist organizations to meet targets e.g. reduction of healthcare acquired infections

# Contact Addresses



[www.hpa.org.uk](http://www.hpa.org.uk)

**North East Health Protection Unit**

**For advice and to report suspected outbreaks**

**Tel: 01912 023 888**